

Windows PC application for managing MOBATIME network products

MOBA-NMS

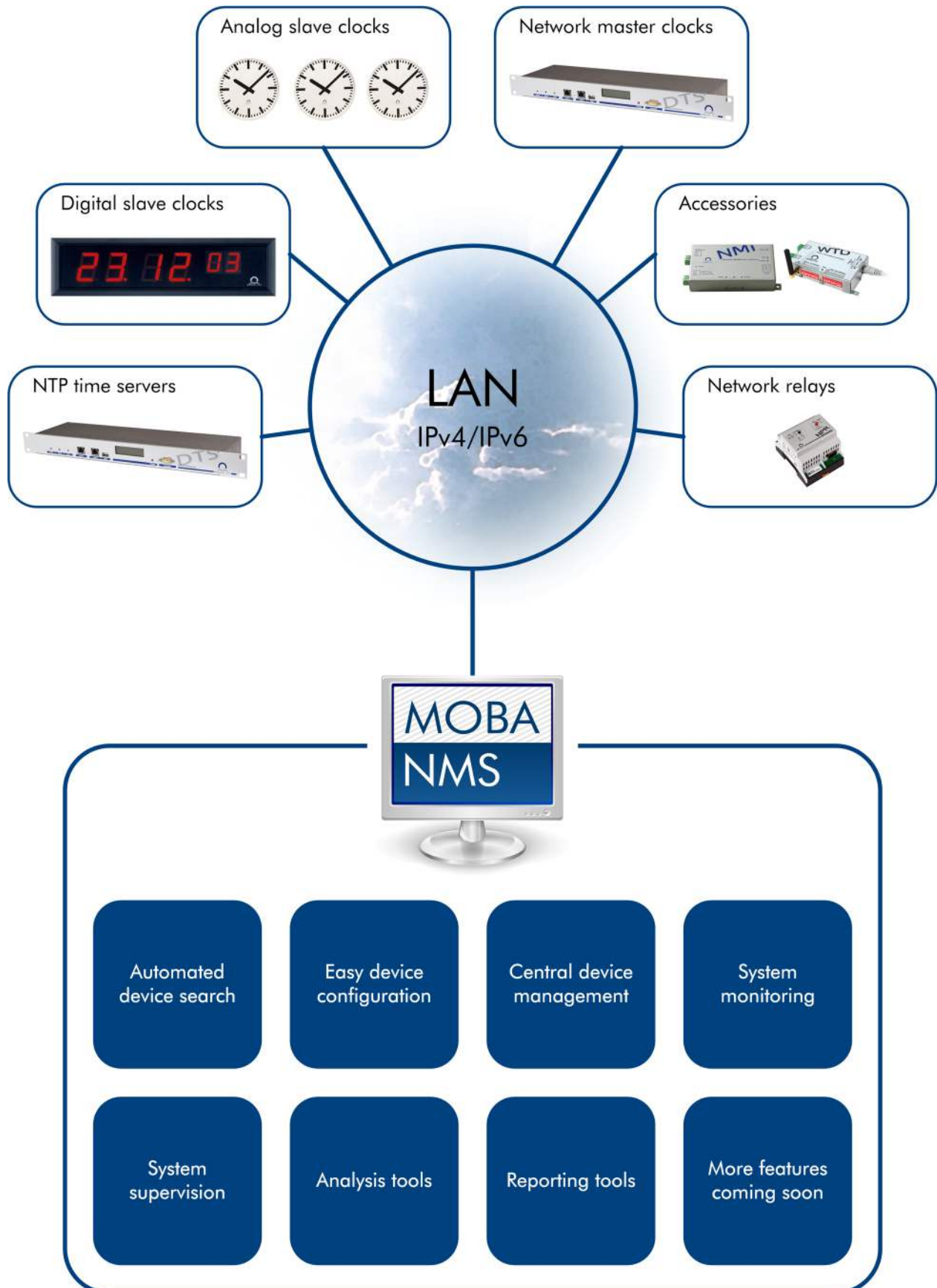
Using the PC Software MOBA-NMS, all network devices of a MOBATIME time system – slave clocks, network master clocks, time servers and accessories – can be easily configured, managed and monitored.

MOBA-NMS guarantees the fastest-possible commissioning as well as a comfortable maintenance of MOBATIME time systems.

Thanks to a user-friendly GUI and various functions, MOBA-NMS is an ideal management tool for single products and small clock systems as well as big time systems with more than 1000 slave clocks.

MOBA-NMS - Application example

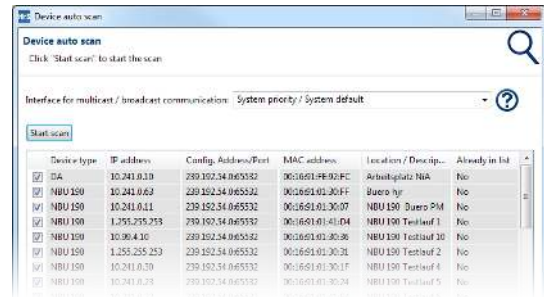
MOBA-NMS is the central access point for each MOBATIME network time system and provides many functions for commissioning, management, maintenance, analysis and monitoring.



MOBA-NMS - Main features

Automated device search

- Find your device with only 1 click
- Almost no network knowledge required
- Extended search functions for experienced users

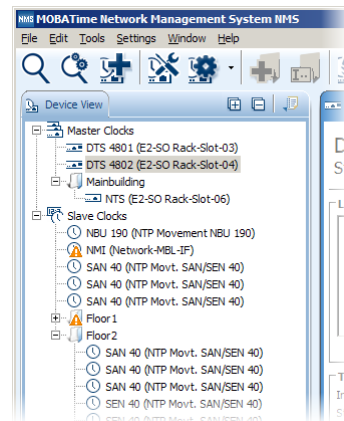


Easy device configuration

- Configuration of device, network and timezones functionality for all supported MOBATIME devices
- Configuration and status overview
- Switch Editor for week program definition
- Guided first configuration wizard*

Central device management

- Keep overview about devices with folders and subfolders
- Configure multiple devices at the same time
- Send commands to multiple devices at once
- Update firmware at all devices simultaneously

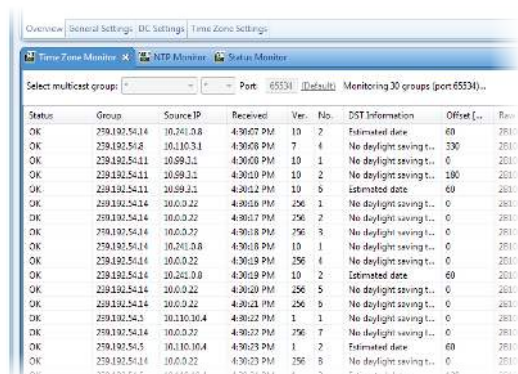


System monitoring and supervision

- See status of all devices at a glance
- Periodic status update of devices/device groups
- Device Supervision Service (DSS): Server application and NMS plugin (NMS Expert only)

Analysis and reporting tools

- Analyze time packages (NTP & Timezone) sent on network
- Export a detailed system report for documentation*
- Automatic error report generation for support issues*



*coming soon

MOBA-NMS - Technical details

Specifications	NMS Basic	NMS Pro Limited	NMS Pro Unlimited	NMS Expert
Product description	NMS Basic is a simple GUI application for commissioning of each MOBATIME network device.	NMS Pro guarantees fast commissioning and easy maintenance of your complete MOBATIME network system. NMS Pro provides convenient functions for configuration and monitoring of all your MOBATIME network devices.		In addition to all the features of NMS Pro Unlimited, NMS Expert offers a central device supervision service (DSS).
Slave device limit	1 device (master/slave)	50 slave devices	< 5000 slave devices	
Master device limit		2 master devices	< 100 master devices	
Single device configuration	✓	✓	✓	✓
Firmware update function	✓	✓	✓	✓
Switch program definition	✓	✓	✓	✓
Central device management	-	✓	✓	✓
User management	-	✓	✓	✓
Device monitoring	-	✓	✓	✓
Analysis & reporting tools	-	✓	✓	✓
Device supervision service (DSS)	-	-	-	✓
Master device types	DTS 4128/4132/4135/4136/4138/4148/4160/4210/4801/4802 , NTS			
Slave device types	Analog clock movements: SAN / SEN 40, NBU 190, TREND NTP Digital clocks: DA, DC, DK, DSC / DSC 100, ECO-DC Accessories: NCC, NMI, NPR, WTD, MOBA-STC			
Supported languages	NMS: EN, DE (Online help: EN, DE) Installer: EN, DE			
Software environment	Windows (32 / 64 bit): 7, 8, 10 Windows Server (32 / 64 bit): 2008, 2012 Java SE Runtime Environment 8			
Hardware environment	1 GHz processor, 1 GB RAM, 1024x768 resolution (or higher), 1 network connection, IPv4/v6			

Licensing

Available licenses	NMS Basic	NMS Pro Limited	NMS Pro Unlimited	NMS Expert
Standard License for new NMS customers	Newest NMS software for 1 workplace (w/o expiration) Maintenance support for 3 years (incl. free software updates)			
Trial License for test and evaluation purposes	Newest NMS software for 1 workplace Expiration after 30 days (execution blocked afterwards)			