

Movements for MOBALine synchronization

SAM 40 / SEM 40

Multifunctional and maintenance-free MOBALine movements for indoor and outdoor clocks up to Ø 40 cm.

The SAM 40 movement is available with hour and minute hands whereas the SEM 40 has an additional second hand.

Both movements are self-setting and powered via MOBALine.

Different running modes of second and minute hand available (step-wise or continuous).

Synchronization via MOBALine from a master clock (e.g. DTS, ETC, CTC or MTC).

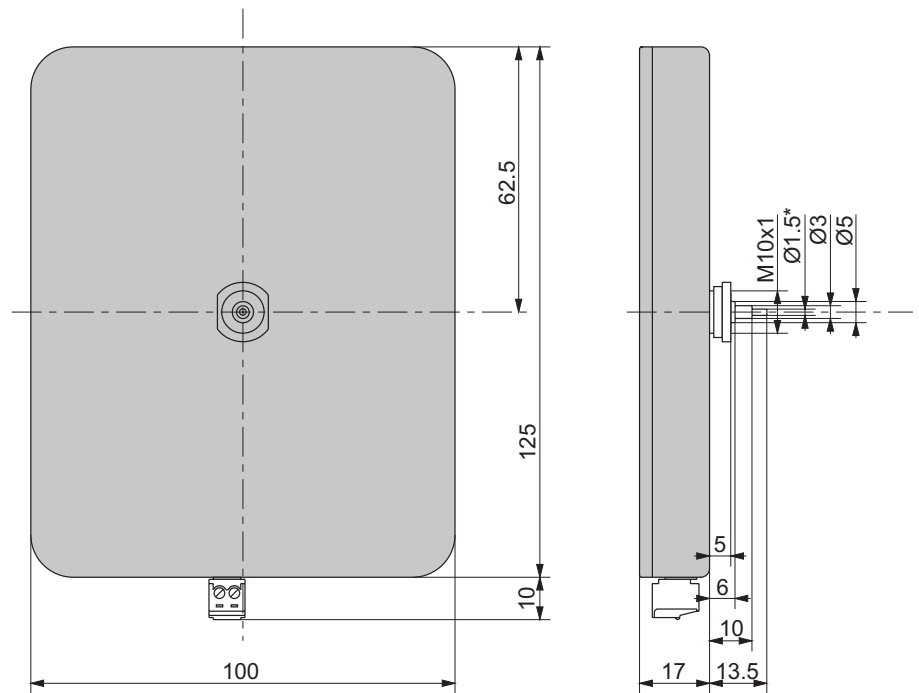
Simple configuration of movements by means of DIP switches.

Automatic daylight saving time change according to the master clock.

The movements support the MOBALine world time function. On the master clock, up to 20 different world time zones with different local time offsets can be configured.

SAM 40 / SEM 40 - Technical details

- Synchronization by a MOBALine master clock.
- Signalization of missing MOBALine synchronization after 24 hours by setting the hands to the 12 o'clock position.
- Different running modes of second and minute hand selectable by means of DIP switches: step-wise or continuous.
- You can choose between 20 different world time zones by means of DIP switches.



* SEM 40 only

Technical Specification	SAM 40 (Art.-Nr. 204009)	SEM 40 (Art.-Nr. 204008)
Synchronization	MOBALine	
Setting time after restart	< 3 minutes 20 seconds	
Daylight saving time changes	< 15 seconds	
Operation voltage	MOBALine: > 10 V, 50 Hz	
Power consumption	< 6 mA @ 17 V	
World time	Up to 20 world times selectable by means of DIP switches	
Accuracy	Typically < +/-50 ms (synchronized)	
Synchronization loss	Signalization after 24 h by setting the hands to 12 o'clock position Accuracy typically +/-2 s after 24 h	
Number of motors	1 (h / min.)	2 (h / min. + sec.)
Temperature range	-30 ... +70°C	
Weight	170 g	185 g
Maximum dial diameter	400 mm	
Maximum dial thickness	3 mm	