

ANALOGUE OUTDOOR CLOCK

FLEX OUTDOOR

The Flex Outdoor clock is robust and modern and therefore suitable for use in outdoor applications and special indoor environments. It is available in a one-sided or double-sided design.



4 STEPS TO YOUR FLEX OUTDOOR

To make sure your Flex Outdoor meets all your requirements, you can assemble the components individually. You can also choose from optional parts. Naturally, our experts will be happy to help.

1. How big is the Flex Outdoor?

SIZE

The Flex Outdoor is only available in one dial diameter. The reading distance varies depending on the dial, lighting, viewing angle, etc.

| Ø | READING DISTANCE |
|------|------------------|
| 40cm | 35-50m |



2.

Would you like the one-sided or the two-sided version?

SHAPE

For the two-sided Flex Outdoor, you can order two identical Flex Outdoor models and the installation set (see page 4)

3. Pick your time code variant:

TIME CODE

| Code | Time code | Ø | Power supply | Hands | Movement | Max. power consumption | Accuracy (synchronized) | Loss of signal |
|------------------------------------|-----------|-------|--------------|-------|----------|---|-------------------------|-------------------------------|
| MOBALINE SELF-SETTING: MXX | | | | | | | | |
| M00 | MOBALine | 25-40 | MOBALine | h/m | SAM 40 | < 6mA @ 17VAC (0.1W) | < +/- 100ms | 12:00 position after 24 hours |
| M21 | MOBALine | 25-40 | MOBALine | h/m/s | SEM 40 | | | |
| NTP (LAN) SELF-SETTING: NXX | | | | | | | | |
| N20 | NTP | 25-40 | PoE | h/m | SAN 40 | PoEclass 1: <1.9W ¹ / <3.8W ² | < +/- 50ms | 12:00 position after 24 hours |
| N21 | NTP | 25-40 | PoE | h/m/s | SEN 40 | | | |

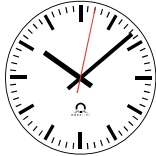
¹ single-sided clock ² cascaded double-sided clock

4. Which dial design do you like?

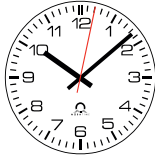
DIAL



dial 120



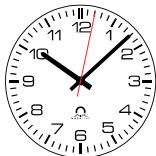
dial 200



dial 210



dial 300



dial 310



dial 360

YOUR FLEX OUTDOOR IS COMPLETE

You can now order your Flex Outdoor and calculate the corresponding code. Enter the abbreviation for each component of your choice in the bright field and find your Flex Outdoor order code.

My Flex Outdoor clock F00.

1. Size Ø cm

2. Shape Code

3. Time code Code

4. Dial Code

Glass type Code

Housing type Code

Sequence number Code

Example order code



| | 1. | 2. | 3. | 4. |
|----------------------------------|-----------|------------|------------|-------------------------------|
| FO | 0. | 40. | R1. | M21. |
| Flex Outdoor | | | | dial 120 |
| no illumination ¹ | | | | mineral glass ¹ |
| Ø 40cm ¹ | | | | standard housing ¹ |
| round, single-sided ² | | | | sequence number ³ |
| movement SEM 40 | | | | |

¹ standard, cannot be changed

² standard, cannot be changed; see double-sided clock information on page 2

³ The sequence number denotes special versions (e.g. clocks with a special dial). When ordering, please indicate the sequence number with 0000 (standard version); we will adapt this for any special version. Special versions can be reordered at any time stating the sequence number.

General properties

The following properties apply to all Flex Outdoor clocks:

| | |
|--------------------|----------------------|
| Cover glass | Mineral glass |
| Housing | Aluminium (RAL 9002) |

Standards

Depending on the movement used in your Flex Outdoor clock, the following standards apply:

| MOVEMENT(S) | STANDARDS |
|--------------------------------------|---|
| SAM 40 SEM 40 SAN 40 SEN 40 | 2011/65/EU / 2014/30/EU / 2014/35/EU / 2016/797/EU EN 50121-4 / EN 60950-1 / EN 61000-6-2 / EN 61000-6-3 |

All Flex Outdoor clocks are compliant with CE, RoHS and REACH.

INSTALLATION VARIANTS



FO.40.WS

Wall and ceiling set

Suspension with clamping ring, made of steel.



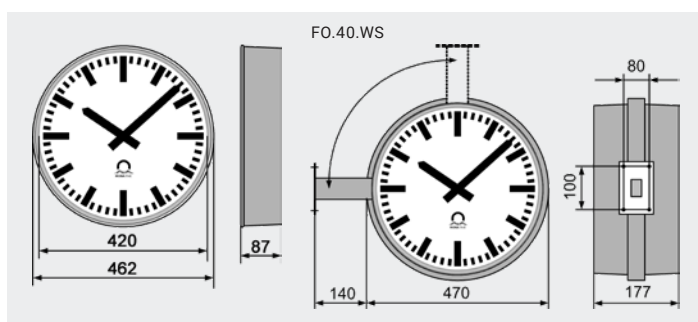
FO.40.BA

Blind cover

Rear cover of suspended single-sided clocks, made of steel.

TECHNICAL DATA

| TECHNICAL DATA | FLEX OUTDOOR |
|----------------------|--|
| Operating conditions | -30 to +70 °C (0 to 95% relative humidity, non-condensing) |
| Degree of protection | IP 65 |
| Weight | <3kg (single-sided clock, without suspension) |



All dimensions in mm.